

C8130/C8135/C8145/C8155/C8170

# Xerox® AltaLink® Colour Multifunction Printer

The Ideal Digital Workplace Assistant for Demanding Teams



ConnectKey®  
Technology

**Espria**  
Empowering digital workspace

For more information, contact us,  
your Xerox Authorized Channel Partner, at  
0330 175 5588  
[www.espria.com](http://www.espria.com)

**xerox**™

# Xerox® AltaLink® C8130/C8135/C8145/C8155/C8170 Colour Multifunction Printer

Want work done right? AltaLink® will help you do a lot more than just print. You can automate document workflows and connect to the systems that run your business – seamlessly. Protected by comprehensive security features, they are true Workplace Assistants that will free up time for you to do more of what really matters.

## A PRODUCTIVE WORK EXPERIENCE FOR ALL

Feel right at home instantly with AltaLink®.

The intuitive and personalised tablet-like interface balances simplicity and efficiency, and reduces steps to complete tasks with a single tap.

Native mobility features make it easy for workers to print from their mobile devices with advanced AltaLink® capabilities such as Xerox® @PrintByXerox App, Xerox® Print Service Plug-in for Android™ or AirPrint™. You can even copy, scan or email without touching the user screen with AltaLink's touchless workflows.

AltaLink® Devices bridge the physical and digital worlds with apps and advanced scanning capabilities that allow you to digitise, route and process information in a snap. Automate tedious tasks to save time, reduce errors with 1-Touch shortcuts or simply allow AltaLink's Adaptive Learning to automate repetitive and complex tasks.

Translate documents to 40 languages. Convert hard copy to audio for easy listening on the go. Get your handwritten notes off the page and into shareable text. Redact content for confidentiality. And convert scans to Microsoft applications – all from the ever-growing Xerox® Workflow Central Platform.

## RIGHT FIT FOR EVERY NEED

Big jobs, small jobs and everything in between – AltaLink® can be customised to do it all. Your choice of finishing options and accessories means you can configure your device for any type of document.

Stay in the fast lane with access to the Xerox App Gallery. It's your gateway to a growing collection of apps designed to simplify time-consuming, repetitive or complex processes as your business evolves.

Simplify IT support as your fleet grows. Fleet Orchestrator allows you to automatically and securely adjust configurations and settings on all your devices at once. Perform interactive training and support your users right from your desktop with the Remote Control Panel.

## COMPREHENSIVE SECURITY

Stop threats where they start with the comprehensive protection that's trusted by the most security-minded businesses and governments.

Built-in security, including AltaLink® Trusted Boot, protects the integrity of the device start-up process from malicious actions; McAfee® whitelisting and integrations with McAfee ePO and Cisco ISE neutralise threats instantly at the device and protect the network. Configuration Watchdog monitors and automatically remediates critical IT-defined security settings.

Protect sensitive documents from unintentional disclosure with AltaLink's Imaging Security – a proprietary marking and infrared detection technology.

Native integration with popular SIEM tools simplifies reporting and management of security events. Xerox® Printer Security Audit Service, available as part of Xerox® Intelligent Workplace Services, helps maximise printer fleet, document and content security.

## COLOUR WHERE IT COUNTS

A high-resolution output of 1200 x 2400 dpi and best-in-class HD Super Fine EA Toner plus superior colour rendering and consistency will give your documents clarity and impact. You can also upgrade your AltaLink® C8100 Series with the Xerox® EX-c C8100 Print Server Powered by Fiery®, delivering more options for professional-looking documents.

## XEROX® CONNECTKEY® TECHNOLOGY

### Intuitive User Experience

Enjoy a tablet-like experience with gesture-based touchscreen controls and easy personalisation, plus simple workflows and functions.

### Mobile and Cloud Ready

Be more mobile with cloud-hosted services and instant connectivity to cloud and mobile devices right from the user interface.

### Comprehensive Security

Prevent unauthorised access, detect threats and protect data and documents with built-in comprehensive security features.

### Enables Intelligent Workplace Services

Seamless integration with Xerox® Intelligent Workplace Services delivers next-level workplace efficiency, employee productivity and security.

### Gateway to New Possibilities

Transform the way you work with the apps in the Xerox App Gallery. Or have one of our partners develop a custom solution for you.

Find out more about how you'll work smarter at [www.connectkey.co.uk](http://www.connectkey.co.uk).



# Xerox® AltaLink® C8130/C8135/C8145/C8155/C8170

## Colour Multifunction Printer

### Single-Pass Duplex Automatic Document Feeder (DADF)

saves time by simultaneously scanning both sides of a document with up to 270 impressions per minute (ipm).



### USER INTERFACE



**Intuitive Tablet-like 10.1-inch Colour Touchscreen** is customisable and lets you perform tasks in just a few taps. Try it out at [xerox.com/AltaLink8100UI](http://xerox.com/AltaLink8100UI).

### PAPER INPUT<sup>3</sup>

**Two 520-sheet Adjustable Trays** (common with all configurations). Tray 1 handles media sizes up to A3 and Tray 2 handles media sizes up to SRA3.



**Envelope Kit** (optional – replaces Tray 1) provides feeding of up to 60 envelopes.



**High-Capacity Tandem Tray Configuration** holds a total paper capacity of up to 3,140 sheets.

**Four-Tray Module Configuration** (available for C8130/C8135) holds a total of up to 2,180 sheets.

**Bypass Tray** handles up to 100 sheets; Custom sizes: 89 x 98 mm to 320 x 1,320 mm.



**High Capacity Feeder** (optional) holds 3,000 sheets of A4 paper, increasing the maximum paper capacity to 6,140 sheets.



### INNOVATIVE TECHNOLOGIES



**Xerox® Integrated RFID Card Reader** (optional) adds card-based authentication with support for over 90 access cards.



**Near Field Communication (NFC) Tap-to-Pair** allows users to tap their mobile devices to the AltaLink® C8100 Series user panel and quickly connect with the multifunction printer.



**Smart Proximity Sensor** detects when users are nearby. It conserves energy during inactive periods and automatically activates the device when a user approaches.

### PAPER OUTPUT/FINISHERS<sup>3</sup>



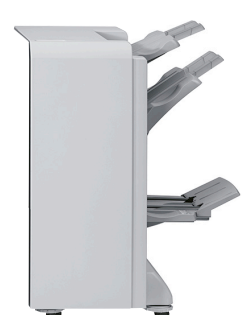
**Office Finisher** (optional) provides advanced finishing functions, optional crease/score and saddle-stitch booklet, capable of 60-page booklets (2 to 15 sheets).



**Business Ready (BR) Finisher** (optional) gives you advanced finishing functions at a great value.



**C-Fold/Z-Fold Unit** (optional) adds C-fold, Z-fold and Z-half-fold capability to the BR Finisher or BR Booklet Maker Finisher.



**BR Booklet Maker Finisher** (optional) creates 64-page saddle-stitched booklets (2 to 16 sheets).



**Dual Offset Catch Tray** (available when no finishers are installed; Single Offset Catch Tray with finishers).



**Integrated Office Finisher** (optional with C8130/C8135/ C8145/C8155) provides 500-sheet stacking and 50-sheet, 2-position stapling.



**Convenience Stapler** (optional) staples up to 50 sheets of 75 gsm media.

### LONG SHEET PRINTING

**Long Sheet Feed Kit** (optional) provides the ability to print up to 320 x 1,320 mm media.



<sup>3</sup> Paper capacities are based on 75 gsm stock; capacities will vary with different weight stocks



# Xerox® AltaLink® C8130/C8135/C8145/C8155/C8170

## Colour Multifunction Printer

ConnectKey®  
Technology

DEVICE SPECIFICATIONS		ALTALINK® C8130	ALTALINK® C8135	ALTALINK® C8145	ALTALINK® C8155	ALTALINK® C8170
Speed¹ (Colour/Black-and-White)		Up to 30/30 ppm	Up to 35/35 ppm	Up to 45/45 ppm	Up to 55/55 ppm	Up to 70/70 ppm
Monthly Duty Cycle²		Up to 90,000 pages	Up to 110,000 pages	Up to 200,000 pages	Up to 300,000 pages	Up to 300,000 pages
Hard Drive/Processor/Memory		Minimum 128 GB SSD; <b>Optional:</b> 500GB HDD/INTEL ATOM® Quad Core, 1.9GHz/4 GB system memory (8 GB system memory AltaLink® C8170)				
Connectivity		10/100/1000Base-T Ethernet, High-Speed USB 2.0 direct print, NFC; <b>Optional:</b> WiFi/WiFi Direct with Xerox® Dual Band Wireless Kit, Bluetooth (iBeacon)				
Optional Controller		Xerox® EX-c C8100 Print Server Powered by Fiery®				
<b>Copy and Print</b>		<b>Copy Resolution:</b> Up to 600 x 600 dpi; <b>Print Resolution:</b> Up to 1200 x 2400 dpi				
First-Copy-Out Time (as fast as) (from platen/warmed-up state)		6.10 seconds colour/4.50 seconds black and white		5.50 seconds colour/ 4.40 seconds black and white	4.70 seconds colour/ 3.70 seconds black and white	4.00 seconds colour/ 3.20 seconds black and white
First-Print-Out Time (as fast as)		5.70 seconds colour/4.20 seconds black and white		4.90 seconds colour/ 3.80 seconds black and white	4.50 seconds colour/ 3.20 seconds black and white	3.80 seconds colour/ 3.00 seconds black and white
Page Description Languages		Adobe® PostScript® 3™, Adobe® PDF, PCL® 5c/PCL® 6				
<b>Paper Input³</b>	Standard	<b>Single-Pass Duplex Automatic Document Feeder (DADF):</b> Up to 82 ppm simplex/141 ipm duplex (200 dpi). 130-sheet capacity for AltaLink® C8130/C8135/C8145/C8155. Paper sizes: 85 x 125 mm to 297 x 432 mm. Up to 135 ppm simplex/270 ipm duplex (200 dpi). 250-sheet capacity for AltaLink® C8170. Paper sizes: 85 x 125 mm to 297 x 432 mm <b>Bypass Tray:</b> 100 sheets; custom sizes: 89 x 98 mm to 320 x 1,320 mm (SEF) <b>Tray 1:</b> 520 sheets; custom sizes: 140 x 182 mm to 297 x 432 mm (SEF) <b>Tray 2:</b> 520 sheets; custom sizes: 140 x 182 mm to SRA3 (SEF)  <b>Four Tray Module:</b> (Trays 3 and 4 – available with AltaLink® C8130/C8135): 1,040 sheets; 520 sheets each; Custom sizes: 140 x 182 mm to SRA3 (SEF). Total standard paper capacity: 2,180 sheets <b>High Capacity Tandem Tray Module:</b> 2,000 sheets; Sizes: A4. Total standard paper capacity: 3,140 sheets  <b>High Capacity Feeder (HCF):</b> Up to 3,000 sheets; Size A4 long-edge feed. Max paper capacity with HCF: 6,140 sheets <b>Envelope Tray (replaces Tray 1):</b> Up to 60 envelopes with Auto Size detection of some sizes <b>Long Sheet Feed Kit (banner printing):</b> 320 x 1,320 mm <b>Multi-feed Detection Kit (available for AltaLink® C8170 only)</b>				
	Choose One					
	Optional					
<b>Paper Output/Finishing³</b>	Standard Optional	<b>Dual-Offset Catch Tray</b> (standard when finishers are not attached): 250 sheets each; Face-up Tray: 100 sheets <b>Integrated Office Finisher:</b> Available with AltaLink® C8130/C8135/C8145/C8155, staple positions: front and rear straight. 500 sheets stacker, 50 sheets stapling, 2-position stapling <b>Office Finisher:</b> 2,000-sheet stacker, 50 sheets stapled, 2-position stapling, optional hole punch, optional booklet maker (score, saddle stitch 2 to 15 sheets (60 pages)) <b>BR Finisher:</b> 3,000-sheet stacker and 500-sheet top tray, 50-sheet multiposition stapling and 2/3-hole punching <b>BR Booklet Maker Finisher:</b> 1,500-sheet stacker and 500-sheet top tray, 50-sheet multiposition stapling and 2/3-hole punching plus saddle-stitch booklet making (2 to 16 sheets, 64 pages) and V-folding <b>C-Fold/Z-Fold Unit:</b> Adds Z-folding, Letter Z-folding and Letter C-folding to the BR Finisher and BR Booklet Maker Finisher <b>Convenience Stapler:</b> 50-sheet stapling, includes Work Surface⁴				
<b>INTUITIVE USER EXPERIENCE</b>						
Customise	Customise user interface, show/hide functions, personalise user experience with authentication, create 1-Touch Apps, auto wake-up with Smart Proximity Sensor, Enable Adaptive Learning to set up shortcuts for repetitive and complex jobs. Copy, scan or email without touching the user screen using the automatic touchless workflow accelerators					
Print Drivers	Job Identification, Bi-directional Status, Job Monitoring, Xerox® Global Print Driver®, Application Defaults, Xerox® Pull Print Driver, Microsoft Universal Print					
Xerox® Embedded Web Server	PC or Mobile – Status Information, Settings, Device Management, Cloning, Fleet Orchestrator, Configuration Watchdog, Remote Control Panel					
Print Features	Print from USB, Print from Cloud Repositories (Dropbox, OneDrive and Google Drive), Sample Set, Saved Job, Booklet Creation, Store and Recall Driver Settings, Scaling, Job Monitoring, Application Control, Two-sided Printing, Draft Mode, Long Sheet (Banner) Printing					
Scan and Fax	Scan Preview, Scan to USB/Email/Network (FTP/SFTP/SMB), Scan File Formats: PDF, PDF/A, JPG, TIFF; Convenience Features: Scan to Home, Searchable PDF, Single/Multi-page PDF/TIFF, Password-protected PDF; Fax Features: Walk-up Fax (one-line or two-line options available, includes LAN Fax, Direct Fax, Fax Forward to Email), Fax Dialling, Unified Address Book, Optical Character Recognition (OCR), Server Fax, TWAIN driver (scan); <b>Optional:</b> Scan to Cloud Repositories (Dropbox, OneDrive and Google Drive)					
<b>MOBILE AND CLOUD READY</b>						
Mobile Connectivity	Near Field Communication (NFC); <b>Optional:</b> WiFi Direct, WiFi (802.11 b/g/n/ac), AirPrint™ (iOS) including iBeacon (Bluetooth)					
Mobile Printing	Mopria® Scan, Apple AirPrint™, Xerox® Print Service (Android), @PrintByXerox; <b>Optional:</b> Xerox® Workplace Mobile App (iOS/Android)					
Mobile Scanning	Mopria® Scan, Apple AirPrint™, <b>Optional:</b> Xerox® Workplace Mobile App (iOS/Android)					
Cloud Ready	Remote services enabled, native "Print from" Cloud repositories (Dropbox, OneDrive, Google Drive), integration with Okta, Ping Identity, Microsoft Azure; <b>Optional:</b> Native "Scan to" cloud repositories (Dropbox, OneDrive, Google Drive), direct connection to cloud-hosted services via optional apps (accessed via Xerox App Gallery app or visit <a href="http://www.xerox.co.uk/AppGallery">www.xerox.co.uk/AppGallery</a> ), <b>Xerox WorkFlow Central Platform</b>					
<b>COMPREHENSIVE SECURITY</b>						
Network Security	802.1x, IPsec, HTTPS, SFTP and Encrypted Email, McAfee® ePolicy Orchestrator®, McAfee Enterprise Security Manager, LogRhythm SIEM, Splunk SIEM, Network Authentication, SNMPv3, SHA-256 Hash Message Authentication, TLS 1.1/1.2/1.3, Security Certificates utilising ECDSA, Automatic Self-signed Certificate, Cisco® Identity Services Engine (ISE) integration, automated threat response through McAfee DXL/Cisco pxGrid integration, Local Authentication (Internal Database), FIPS 140-2					
Device Access	User Access and Internal Firewall, Port/IP/Domain Filtering, Audit Log, Access Controls, User Permissions, Configuration Watchdog, TPM, Log-in with Okta, Ping Identity and Microsoft Azure credentials; <b>Optional:</b> Smart Card Enablement Kit (CAC/PIV/NET/SIPRNet)⁵, Xerox® Integrated RFID Card Reader, NFC standard (authentication via optional Xerox® Workplace Cloud/Suite Print Management and Content Security; learn more at <a href="http://www.xerox.co.uk/en-gb/office/print-management-solutions">www.xerox.co.uk/en-gb/office/print-management-solutions</a> )					
Data Protection	McAfee Whitelisting, Firmware Verification, Trusted Boot, Job Level Encryption via HTTPS and Drivers, Encrypted Storage Drive (AES 256-bit, FIPS 140-2), Encrypted and Signed Email; <b>Optional:</b> Xerox® Workplace Cloud/Suite Content Security, Encrypted Hard Disk (AES 256-bit, FIPS 140-2) with Image Overwrite, McAfee Integrity Control					
Document Security	Common Criteria Certification (ISO 15408) full system against the HCP PP, Encrypted Secure Print, FIPS 140-2 Encrypted Data with Print Drivers, Imaging Security with AltaLink's proprietary marking and infrared detection technology.					
<b>ENABLES INTELLIGENT WORKPLACE SERVICES</b>						
Print Management	Xerox® Standard Accounting; <b>Optional:</b> Xerox® Workplace Suite/Cloud, Xerox® Virtual Print Management Service, more at <a href="http://www.xerox.co.uk/en-gb/office/printer-software#printmanagement">www.xerox.co.uk/en-gb/office/printer-software#printmanagement</a>					
Fleet/Device Management	Xerox® CentreWare® Web, Xerox® Support Assistant, Automated Meter Read, Xerox® Cloud Fleet Management Solution, Fleet Orchestrator, Configuration Cloning; <b>Optional:</b> Intelligent Workplace Services Suite, Cloud-based remote management with Xerox® Workplace Cloud⁶					
Security	Secure Device Management: Xerox® Printer Security Audit Service (auto-configuration of security settings, monitoring and auto-remediation), Digital Certificate Management, SIEM Reporting, Interactive Dashboard Reports					
<b>GATEWAY TO NEW POSSIBILITIES</b>						
Xerox and Partner Apps	Automate everyday processes with apps that translate, redact, convert text to audio or handwritten notes to text files, and paper documents to Microsoft applications, all from a single cloud-based. Or visit <a href="https://www.xerox.co.uk/en-gb/connectkey/workplace-apps">https://www.xerox.co.uk/en-gb/connectkey/workplace-apps</a> to find apps by industry or workflow					
Software and Solutions	Xerox® DocuShare® ( <a href="http://www.xerox.co.uk/ecm">www.xerox.co.uk/ecm</a> ), XMPie® ( <a href="http://www.xerox.co.uk/en-gb/digital-printing/workflow-software/printing-software/xmpie-personalised-communication-software">www.xerox.co.uk/en-gb/digital-printing/workflow-software/printing-software/xmpie-personalised-communication-software</a> ), Xerox® Workplace Solutions ( <a href="http://www.xerox.co.uk/en-gb/office/print-management-solutions">www.xerox.co.uk/en-gb/office/print-management-solutions</a> ), <b>Xerox WorkFlow Central Platform</b>					

¹ Declared in accordance with ISO/IEC 24734

² Maximum volume capacity expected in any one month. Not expected to be sustained on a regular basis

³ Paper capacities are based on 75 gsm stock; capacities will vary with different weight stocks

⁴ Sold separately in some geographical locations

⁵ Not available in all geographical locations

⁶ Available in selected markets

Certifications: [www.xerox.com/OfficeCertifications](http://www.xerox.com/OfficeCertifications)

More information is available at <https://www.xerox.co.uk/en-gb/connectkey/altalink>.

© 2021 Xerox Corporation. All rights reserved. Xerox®, AltaLink®, CentreWare®, ConnectKey®, DocuShare® and Global Print Driver® are trademarks of Xerox Corporation in the United States and/or other countries. XMPie® is a trademark of XMPie, Inc. Mopria® is a trademark of the Mopria® Alliance. The information in this brochure is subject to change without notice. 08/21 TSK-2206 BR29460 AC8BR-05ED

**xerox**™